

Excel Optical Fibre Patch Panel - Sliding Drawer - SC Style Multimode/Singlemode



X Multimode and Singlemode

X Sliding Drawer Design

X Management and Fixing Kit Included

Features

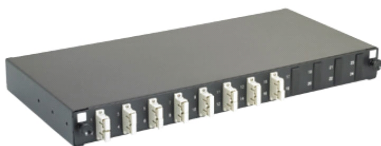
- Multimode and Singlemode
- Choice of Port Density
- Management and Fixing Kit Included
- Upto 24 duplex adaptors per patch panel
- Port identification numbers
- 25 Year System Warranty
- Sliding Drawer Design
- High Density - Upto 48 fibres
- 1U rack space design
- Adjustable fixing arms included
- Multiple cable entry to rear

Product Overview

The Excel range of SC patch panels are sliding drawer 'tray style' housings suitable for either direct termination or splicing of upto 48 fibres in 1U of rack space. Each panel is manufactured from high quality 2mm thick steel and finished in Black powder coated paint to provide a strong and durable unit. To the front of the patch panel the specified number of duplex adaptors are loaded from left to right. The fascia also houses the release latches for the sliding drawer. Each panels utilises colour coded adaptors, Beige for multimode, Blue for singlemode. Each duplex adaptor accommodates two terminated fibres. Each panel has included within it a set of adjustable fixing arms, and a cable management pack which includes cable entry glands, cable ties, and a 24 way splice bridge.



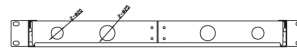
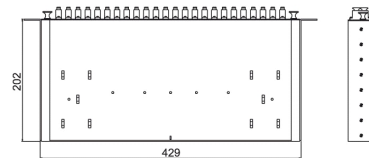
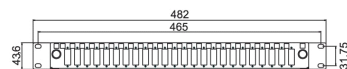
A. Sliding drawer design



B. Part loaded panels allow for expansion



C. Adjustable fixing arms, clear port and panel labelling



D. Product dimensions, front, plan and rear view and fixing arms, shown in mm

Accessories Included

Item	Quantity
Cable gland (PG 13.5)	1
Cable gland (PG 19)	1
Nylon cable tie	10
Adjustable cable tie	6
12 Position splice holder	2
Label holder (210 x 9.2 mm)	2
Mounting twist tie	6
Blanking plug (RSB-19)	2
Blanking plug (RSB-25)	3
Cage nut and screw rack mounting kit	1 pack

Product Specification

Patch Panel		ROHS Compliant Adaptor	
Width (inc fixing arms)	482 mm	Multimode Insertion Loss	0.2dB Maximum
Depth	202mm	Singlemode Insertion Loss	0.3dB Maximum
Height	43mm	Durability	Min Life 500 Insertions
Colour	Black RAL9005	Multimode Adaptor Wavelength	850 to 1300nm
Operating Temperature	-25 to +40 °C	Singlemode Adaptor Wavelength	1310 to 1550nm
		Operating Temperature	-40 to +80 °C

Part Number Information - Multimode

Part No.	Description
200-401	12 Way Multimode Fibre Optic Panel - 4 SC Duplex (8 Fibre)
200-405	12 Way Multimode Fibre Optic Panel - 6 SC Duplex (12 Fibre)
200-406	12 Way Multimode Fibre Optic Panel - 8 SC Duplex (16 Fibre)
200-407	12 Way Multimode Fibre Optic Panel - 12 SC Duplex (24 Fibre)
200-408	24 Way Multimode Fibre Optic Panel - 24 SC Duplex (48 Fibre)

Part Number Information - Singlemode

Part No.	Description
200-480	12 Way Singlemode Fibre Optic Panel - 4 SC Duplex (8 Fibre)
200-481	12 Way Singlemode Fibre Optic Panel - 6 SC Duplex (12 Fibre)
200-482	12 Way Singlemode Fibre Optic Panel - 8 SC Duplex (16 Fibre)
200-483	12 Way Singlemode Fibre Optic Panel - 12 SC Duplex (24 Fibre)
200-411	24 Way Singlemode Fibre Optic Panel - 24 SC Duplex (48 Fibre)

Part Number Information - Unloaded

Part No.	Description
200-951	24 Way SC Duplex/LC Quad Fibre Optic Panel - Empty
200-952	24 Way SC Simplex/LC Duplex Fibre Optic Panel - Empty

System Warranty

The Excel System Warranty provides a 25-year product and applications assurance of compliance with the industry performance standard appropriate to the class of cabling installed. The warranty may be applied for by an accredited Excel Partner who has designed, supplied and installed the said system.



axilan

c.so santorre di santarosa 36, cuneo, Cuneo, 12100, Italia

Tel: +390171692038

Email: info@axilan.it Web: www.axilan.it



axilan[®]
OPTICAL and COPPER WIRING

E&OE. Excel is a registered trade name of Mayflex Holdings Ltd.

www.excel-networking.com